

AUTHORITY IN VINTAGE JEWELRY

JEWELRY CARE

GUIDE



VERMA
GROUP

vermajewelry.com

Care Instructions

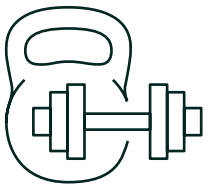
How to prolong the life of your exquisite pieces



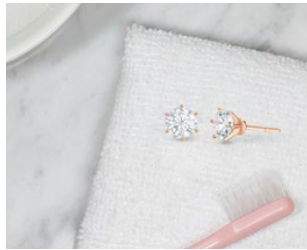
Avoid contact with chemicals, lotions, scents and other cosmetics.



Soak your jewellery in mild detergent solution for 5-10 minutes. Remember to avoid using abrasive detergents like bleach or chlorine.



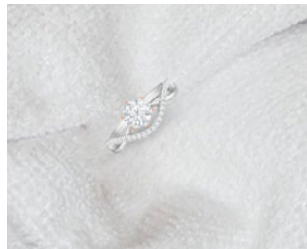
Remove jewellery while performing physically intensive tasks.



Gently clean your jewellery with a soft brush to remove any stubborn dust or dirt.



Remove jewellery when swimming or during saunas/spa's.



Pat dry with a soft microfiber cloth.

Storing jewellery At it's pristine condition

Put on your jewellery only after applying your make-up and perfume as chemicals can and may lead to discoloration of your jewellery. It is best to store diamond jewellery separate from other pieces to prevent scratches.